

**Protein Name**  
 IL6R $\alpha$

**Expression Host**  
 HEK293T

**Alternate Name(s)**

Cluster of Differentiation 126, CD126, IL6R, IL-6R-1, IL-6RA, IL6Q, IL6RA, IL6RQ, gp80, Interleukin-6 receptor, interleukin 6 receptor

**Purity**

Greater than 90% dimer form as determined by SDS-PAGE under non-reducing condition

**Protein Construct**

IL-6R $\alpha$  dimer protein contains the IL-6R $\alpha$  extracellular domain (UniProt# P08887) fused with a proprietary cis-dimer motif followed by a His tag at the C-terminus. Expressed in HEK293T cell line.

**Amino Acid Range**

L20-P365

**SDS-Page Molecular Weight**

93 kDa. The migration range of the dimer protein with glycosylation under non-reducing condition is between 120 and 190 kDa on SDS PAGE.

**Formulation**

0.22 $\mu$ m filtered PBS, pH 7.4

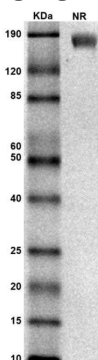
**Shipping Conditions**

Frozen Dry Ice

**Stability & Storage**

-80°C

**SDS-PAGE**



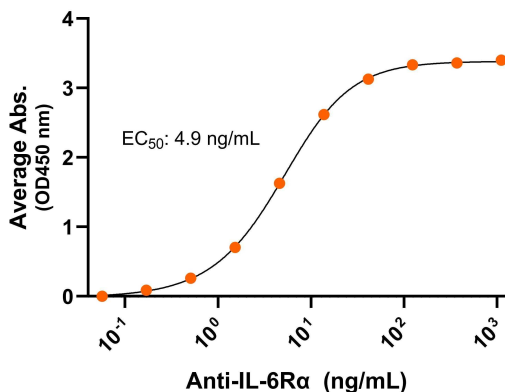
MW: Molecular Weight marker reduced condition  
 NR: IL-6R $\alpha$  dimer under non-reduced condition

The migration range of the dimer protein with glycosylation under non-reducing condition is between 120 and 190 kDa on SDS PAGE.

## Bioactivity – Antibody Binding

### Human IL-6R $\alpha$ -His dimer, ELISA

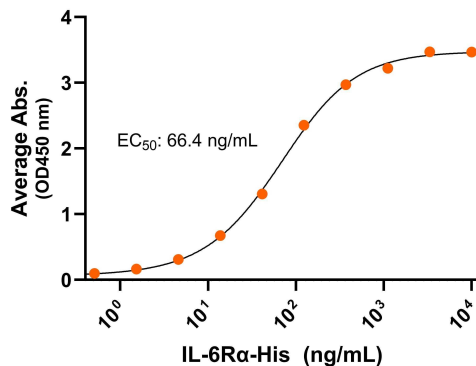
0.2 $\mu$ g of IL6R $\alpha$  protein dimer per well



## Bioactivity – Ligand Binding

### Human IL-6R $\alpha$ -His dimer/ IL-6, ELISA

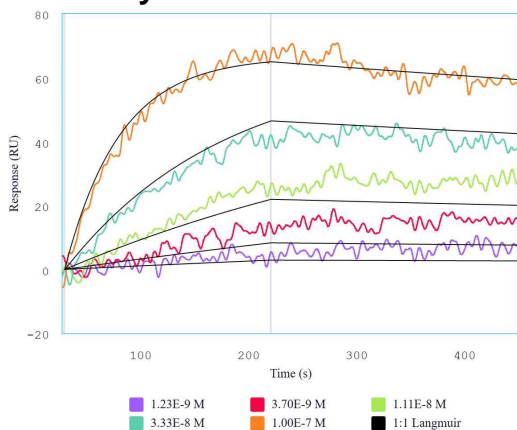
0.2 $\mu$ g of IL-6 protein per well



Immobilized human IL-6R $\alpha$  protein dimer, His-tag (CSP-25223-01) at 2  $\mu$ g/mL (100  $\mu$ L/well) can bind anti-human IL-6R $\alpha$  monoclonal antibody with half maximal effective concentration (EC<sub>50</sub>) range of 2.4-9.7 ng/mL (QC tested).

Immobilized human IL-6 at 2  $\mu$ g/mL (100  $\mu$ L/well) can bind human IL-6R $\alpha$  protein dimer, His-tag (CSP-25223-01) with half maximal effective concentration (EC<sub>50</sub>) range of 33.2-132.7 ng/mL (QC tested).

## Bioactivity – BLI



Immobilized human IL-6 can bind human IL-6R $\alpha$  protein dimer, His-tag (CSP-25223-01) protein with a K<sub>D</sub> of 0.9-3.6 nM as determined by SPR.



Bioactive, Recombinant Human IL-6R $\alpha$  Protein Dimer, His Tag  
Product Code: CSP-25223-01  
For Research Use Only (RUO)

## Background

Human interleukin 6 receptor alpha (IL-6R $\alpha$ ) is a Type 1 transmembrane protein and Type 1 cytokine receptor and plays a crucial role in immune response, inflammation, and hematopoiesis. IL-6R $\alpha$  is also known as Cluster of Differentiation 126 (CD126), IL6R, CD126, IL-6R-1, IL-6RA, IL6Q, IL6RA, IL6RQ, and gp80. IL-6R $\alpha$  contains an extracellular domain with an Ig-like domain, cytokine binding module (CBM) domains, and a long flexible stalk region followed by a transmembrane domain and intracellular domains. IL-6R $\alpha$  binding to its ligand interleukin 6 (IL-6) results in homodimerization and subsequent association with IL-6R $\beta$  (gp130) dimer resulting in higher order complexes. IL-6R $\alpha$  is involved in multiple disease processes due to its central role in IL-6 signaling. Dysregulation of IL-6R $\alpha$  is implicated in many cancers and autoimmune diseases, therefore, a recombinant protein mimicking the IL-6R $\alpha$  dimer conformation can be critical for basic research and therapeutic discovery.