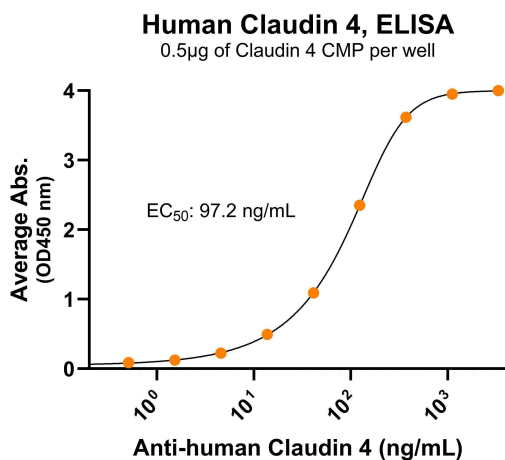
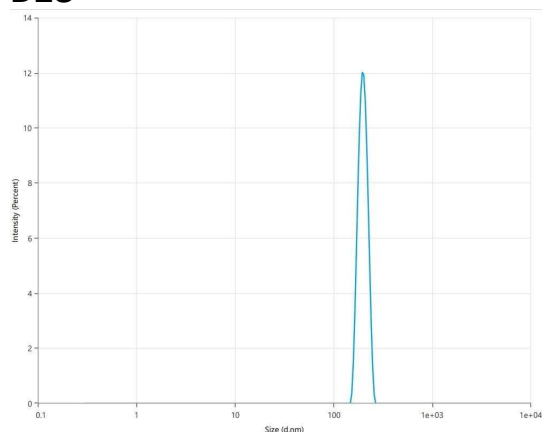


## Bioactivity – Antibody Binding



Immobilized human Claudin 4 VLP (Cat. No. CMP-24006) at 5 µg/mL (100 µL/well) can bind monoclonal anti-human Claudin 4 antibody with half maximal effective concentration (EC<sub>50</sub>) range of 48.6-194.4 ng/mL (QC tested).

## DLS



The mean peak diameter (nm) of the CMP is 199.2 with a range of 189.2-209.2 with more than 95% intensity as determined by dynamic light scattering (DLS).



## Human Claudin 4 Full Length Protein, Displayed on Nanoparticles

Product Code: CMP-24006  
For Research Use Only (RUO)

**Expression Host**  
HEK293T

**Alternate Name(s)**  
Claudin-4, CLDN4

**Protein Construct**  
Claudin 4 protein contains 209 amino acids (Met1 - Val209; UniProt# NP\_001296.1), and is displayed on nanoparticles that mimics the native protein conformation on the cell surface. Expressed in HEK293T cell line.

**Shipping Conditions**  
Frozen Dry Ice

**Protein Name**  
Human Claudin 4

**Amino Acid Range**  
Met1 - Val209

**Formulation**  
0.22µm filtered PBS, pH 7.4

**Stability & Storage**  
-80°C

### Background

Claudin 4, also known as CLDN4, is an integral membrane protein with 4 transmembrane domains, two extracellular loops, two intracellular loops, both N-terminus and C-terminus ends towards the cytosol. Human Claudin 4 is a component of tight junction strands and may play a role in internal organ development and function during pre- and postnatal life. Claudin 4 can also be used as a marker for distinguishing malignant mesothelioma from lung cancer and uterine serous carcinoma. As a pancreatic cancer marker in cell-blocks of effusion specimens, it has also been found to have a superior performance to BerEp4 staining.