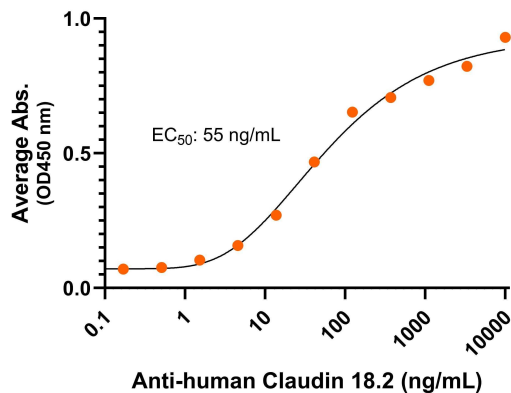


Bioactivity – Antibody Binding

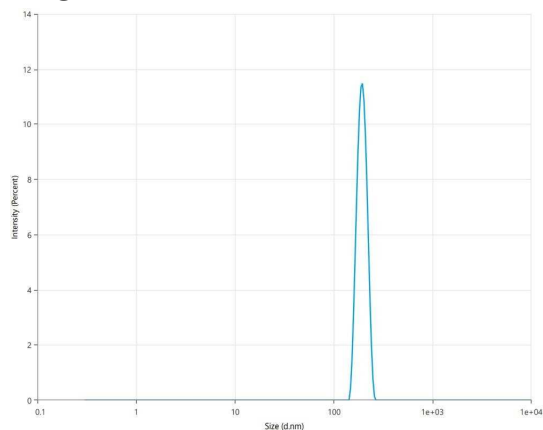
Human Claudin 18.2, ELISA

0.5 µg of Claudin 18.2 CMP per well



Immobilized human Claudin 18.2 VLP (Cat. No. CMP-24001) at 5 µg/mL (100 µL/well) can bind monoclonal anti-human Claudin 18.2 antibody with half maximal effective concentration (EC₅₀) range of 27.5-110 ng/mL (QC tested).

DLS



The mean peak diameter (nm) of the CMP is 194.4 with a range of 184.4-204.4 with more than 95% intensity as determined by dynamic light scattering (DLS).



Human Claudin 18.2 Full Length Protein, Displayed on Nanoparticles

Product Code: CMP-24001
For Research Use Only (RUO)

Expression Host
HEK293T

Alternate Name(s)
Claudin-18.2, CLDN18.2, SFTA5, SFTPJ

Protein Construct
Claudin 18.2 full length protein (amino acids Met1-Val261; UniProt# P56856-2), displayed on nanoparticles mimics the native protein conformation on the cell surface. Expressed in HEK293T cell line.

Shipping Conditions
Frozen Dry Ice

Protein Name
Human Claudin 18.2

Amino Acid Range
Met1-Val261

Formulation
0.22µm filtered PBS, pH 7.4

Stability & Storage
-80°C

Background

Claudin 18.2, also known as Claudin-18.2, CLDN18.2, SFTA5, and SFTPJ is an integral membrane protein with 4 transmembrane domains, two extracellular loops, one intracellular loop, and both the N-terminus and C-terminus ends towards the cytosol. Human Claudin 18.2 is a member of the Claudin protein family and is involved in tight junctions and cell-to-cell adhesion. Claudin 18.2 is over-expressed on various tumor cells including gastric cancer and pancreatic cancer, and plays a critical role in cancer initiation and progression. Claudin 18.2 is a promising target for cancer therapeutics.