

Product Name: Human GLP1R Protein, His Tag

Product Code: sCMP-25034

FOR RESEARCH USE ONLY (RUO)

Protein Name: soluble GLP1R

Alternate Name(s): GLP-1-R, GLP-1R, glucagon like peptide 1 receptor

Expression Host
HEK293T

Amino Acid Range
R24-E138

Protein Construct

The recombinant GLP1R protein contains the GLP1R extracellular N-terminus (UniProt# P43220) with a His tag at the C-terminus. Expressed in HEK293T cell line.

SDS-Page Molecular Weight

13.5 kDa. The migration range of the protein with glycosylation under non-reducing conditions is between 20 and 40 kDa on SDS PAGE.

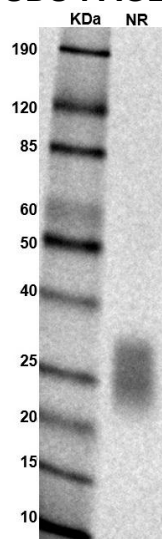
Purity

Formulation

Stability & Storage
-80°C

Shipping Conditions
Frozen Dry Ice

SDS-PAGE

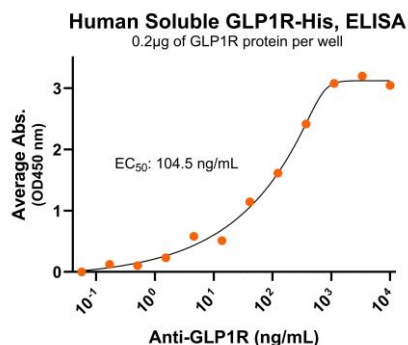


MW: Molecular Weight marker reduced condition

NR: soluble GLP1R under non-reduced condition

The migration range of the protein with glycosylation under non-reducing conditions is between 20 and 40 kDa on SDS PAGE.

Antibody Binding



Immobilized human soluble GLP1R (Cat. No. sCMP-25034) can bind anti-human soluble GLP1R polyclonal antibody with half maximal effective concentration (EC₅₀) range of 52.2-208.8 ng/mL (QC tested).

Background

Human glucagon-like peptide-1 receptor (GLP1R) is a member of the class B family of G protein-coupled receptor (GPCR) and found on beta cells of the pancreas as well as on neurons of the brain. GLP1R is the receptor of glucagon-like peptide 1 (GLP-1). GLP1R contains an extracellular N-terminus that binds GLP-1 resulting in enhanced insulin secretion and production. Due to its involvement in intracellular signaling pathways that regulate insulin secretion, glucose metabolism, and satiety, GLP1R and GLP-1 are important targets for therapeutics for the treatment of type 2 diabetes and weight loss.