
Alternate Names	Protease-activated receptor 1, coagulation factor II receptor, thrombin receptor, F2R, TR, PAR-1, CHTR
Isotype	IgG2b
Conjugate	Unconjugated
Background	Human proteinase-activated receptor 1 (PAR1), also known as thrombin receptor, is a G protein-coupled receptor (GPCR) on the cell surface with seven transmembrane domains. PAR1 is activated by thrombin cleavage of its extracellular propeptide at the N-terminus. PAR1 is highly expressed on platelets and endothelial cells. PAR1 is involved in the regulation of thrombotic response and plays a key role in mediating coagulation and inflammation, which is crucial in the pathogenesis of inflammatory and fibrotic lung diseases.

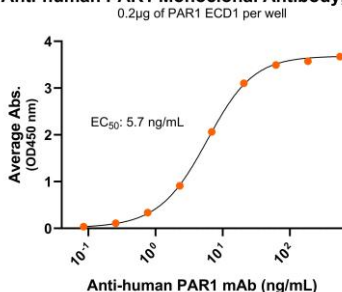
Product Details

Specificity	Human proteinase-activated receptor 1 / PAR1
Antibody Type	Monoclonal antibody
Host Species	Mouse
Immunogen	PAR1, Ala22-The102; UniProt # P25116
Formulation / Storage buffer	0.22µm filtered PBS, pH 7.4
Shipping	Frozen Dry Ice
Purification	Affinity Enrichment
Stability & Storage	-80°C
Verified Application	ELISA, Flow cytometry, LSPR
Recommended Usage	ELISA: starting concentration 1 µg/mL Flow cytometry: 0.5 µg/1E6 cells LSPR: Recommended maximum concentration, 200 nM

Bioactive Data, Detection of Antigen by:

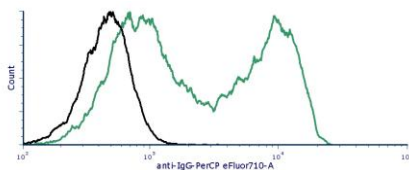
ELISA

Anti-human PAR1 Monoclonal Antibody, ELISA



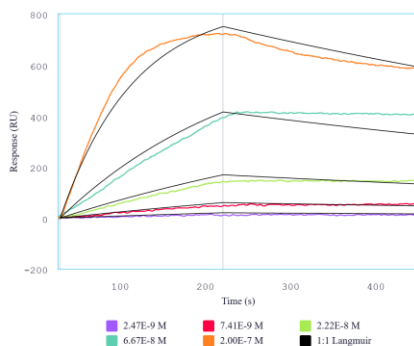
Immobilized human PAR1 extracellular domain loop 1 at 2 µg/mL (100 µL/well) can bind Mouse Anti-Human PAR1 Monoclonal Antibody (Cat. No. CABh-24076) with half maximal effective concentration (EC₅₀) range of 2.8-11.3 ng/mL (QC tested).

Flow Cytometry



Detection of PAR1 in HEK293 human cell Line transiently transfected with human PAR1 by Flow Cytometry. HEK293 cell line transfected with human PAR1 (green curve) or mock (black curve) was stained with Mouse Anti-Human PAR1 Monoclonal Antibody (Catalog # CABh-24076) by PerCP-conjugated Anti-Mouse IgG Secondary Antibody.

SPR



Immobilized human PAR1 extracellular domain loop 1 can bind Mouse Anti-Human PAR1 Monoclonal Antibody (Cat. No. CABh-24076) with a K_D of 4.8-19.1 nM as determined by SPR.



Mouse Anti-Human PAR1 Monoclonal Antibody
Product Code: CABh-24076
Clone: 14A11-2H2
For Research Use Only (RUO)

Antigen Details

Structure	7-transmembrane protein, G protein-coupled receptor (GPCR)
Function	Mediate coagulation and inflammation
Ligand / Receptor	thrombin, activated protein C
Cell Type	platelets and endothelial cells
Molecular Family	G protein-coupled receptor
Gene ID	P25116