

Alternate Names	GLP-1-R, GLP-1R
Isotype	IgG2a
Conjugate	Unconjugated
Background	Human glucagon-like peptide-1 receptor (GLP1R), is a 7-transmembrane G protein-coupled receptor (GPCR) and is a member of the glucagon receptor family of GPCRs. It is a Class B GPCR. GLP1R is highly expressed in beta cells of the pancreas and on neurons of the brain. By binding its ligand GLP-1, it is involved in the control of blood sugar level by enhancing insulin secretion. GLP1R agonists are used as therapeutics in the treatment of type 2 diabetes and obesity. Human GLP1R protein has ~98% and ~92% sequence homology with macaque and mouse GLP1R, respectively.

Product Details

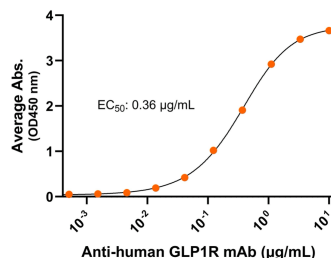
Specificity	Human glucagon-like peptide-1 receptor/GLP1R
Antibody Type	Monoclonal antibody
Host Species	Mouse
Immunogen	GLP1R N-terminus, the exact sequence of the immunogen is proprietary.; UniProt # P43220
Formulation / Storage buffer	0.22µm filtered PBS, pH 7.4
Shipping	Frozen Dry Ice
Purification	Affinity Enrichment
Stability & Storage	-80°C
Verified Application	ELISA, Flow cytometry, SPR
Recommended Usage	ELISA: starting concentration 1 µg/mL Flow cytometry: 0.2-0.8 µg/1E6 cells

Bioactive Data, Detection of Antigen by:

ELISA

Anti-human GLP1R Monoclonal Antibody, ELISA

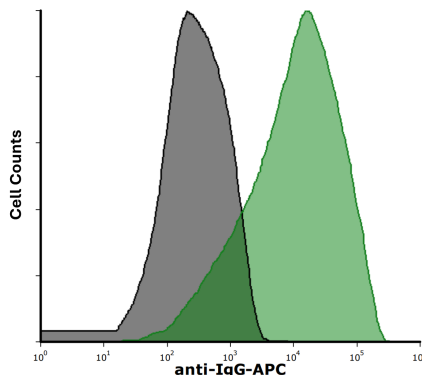
0.2 µg of GLP1R protein per well



Immobilized human GLP1R fragment at 2 µg/mL (100 µL/well) can bind Mouse Anti-Human GLP1R Monoclonal Antibody (Cat. No. CABh-24034) with half maximal effective concentration (EC₅₀) range of 0.2-0.7 µg/mL (QC tested).

Flow Cytometry

mAb binding GLP1R expressing live cells (Flow Cytometry)



Detection of GLP1R in HEK293 human cell line transiently transfected with human GLP1R by Flow Cytometry. HEK293 cell line transfected with human GLP1R was stained with isotype control (black curve) or Mouse Anti-Human GLP1R Monoclonal Antibody (Cat. No. CABh-24034) (green curve) by APC-conjugated Anti-Mouse IgG Secondary Antibody.



Anti-Human GLP1R Monoclonal Antibody

Product Code: CABh-24034

Clone: 12D11-E10

For Research Use Only (RUO)

Antigen Details

Structure	7-transmembrane protein, G protein-coupled receptor (GPCR)
Function	Control of blood sugar level by enhancing insulin secretion
Ligand / Receptor	GLP-1
Cell Type	beta cells of the pancreas and on neurons of the brain
Molecular Family	G protein-coupled receptor
Gene ID	P43220