

---

<b>Alternate Names</b>	BNMD17, GPR48, DPSL
<b>Isotype</b>	IgG2a
<b>Conjugate</b>	Unconjugated
<b>Background</b>	Human Leucine-rich repeat-containing G-protein coupled receptor 4 (LGR4), also called BNMD17, GPR48, and DPSL, is a 7-transmembrane G protein-coupled receptor (GPCR). It is a Class B GPCR. Upon binding R-spondins, LGR4 triggers the canonical Wnt signaling pathway to increase expression of target genes. Unlike most classical G-protein coupled receptors, LGR4 does not activate heterotrimeric G-proteins to transduce the signal. LGR4 is a potential diagnostic biomarker and therapeutic target due to its promotion of tumorigenesis in some cancers. Human LGR4 protein has ~97% and ~93% sequence homology with macaque and mouse LGR4, respectively.

## Product Details

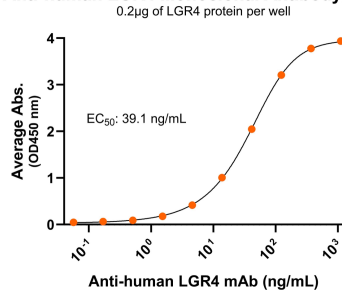
---

<b>Specificity</b>	Human Leucine-rich repeat-containing G-protein coupled receptor 4/LGR4 shows low affinity binding to LGR4 transfected cells by flow cytometry.
<b>Antibody Type</b>	Monoclonal antibody
<b>Host Species</b>	Mouse
<b>Immunogen</b>	LGR4 N-terminus, the exact sequence of the immunogen is proprietary.; UniProt # Q9BXB1
<b>Formulation / Storage buffer</b>	0.22µm filtered PBS, pH 7.4
<b>Shipping</b>	Frozen Dry Ice
<b>Purification</b>	Affinity Enrichment
<b>Stability &amp; Storage</b>	-80°C
<b>Verified Application</b>	ELISA, SPR
<b>Recommended Usage</b>	ELISA: starting concentration 1 µg/mL. LSPR: Recommended maximum concentration, 100 nM.

## Bioactive Data, Detection of Antigen by:

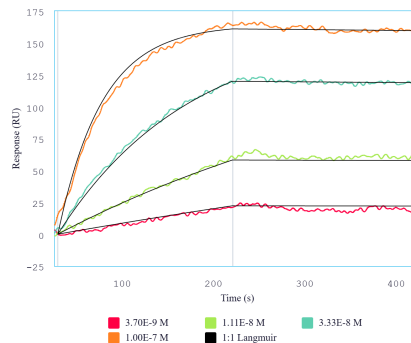
### ELISA

#### Anti-human LGR4 Monoclonal Antibody, ELISA



Immobilized human LGR4 at 2 µg/mL (100 µL/well) can bind Mouse Anti-Human LGR4 Monoclonal Antibody (Cat. No. CABh-25292) with half maximal effective concentration (EC<sub>50</sub>) range of 19.6-78.2 ng/mL (QC tested).

### SPR



Immobilized human LGR4 protein can bind Mouse Anti-Human LGR4 Monoclonal Antibody (Cat. No. CABh-25292) with a KD of 0.1-0.4 nM as determined by LSPR (Nicoya Alto).

## Antigen Details

---

<b>Structure</b>	7-transmembrane protein, G protein-coupled receptor (GPCR)
<b>Function</b>	Activator of the Wnt signaling pathway required for the development of various organs
<b>Ligand / Receptor</b>	R-spondins
<b>Cell Type</b>	Variable expression in most tissues; over-expressed on cancer cells, for example, lung cancer adenocarcinomas
<b>Molecular Family</b>	G protein-coupled receptor
<b>Gene ID</b>	Q9BXB1