

Alternate Names	GIP-R, PGQTL2, glucose-dependent insulinotropic polypeptide receptor
Isotype	IgG2a
Conjugate	Unconjugated
Background	Human gastric inhibitory polypeptide receptor (GIPR), also called GIP-R, PGQTL2, is a 7-transmembrane G protein-coupled receptor (GPCR) belonging to the Class B GPCR family. GIPR is highly expressed in beta-cells in the pancreas. Upon gastric inhibitory polypeptide (GIP) (also known as glucose-dependent insulinotropic polypeptide) ligand binding, activates Gs-cAMP signaling, leading to glucose-dependent insulin secretion. GIPR is an important therapeutic target in metabolic diseases including Type 2 diabetes and obesity. Human GIPR protein has >95% and ~80% sequence homology with macaque and mouse GIPR, respectively.

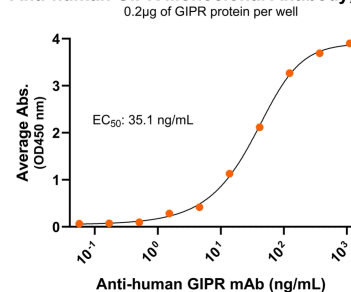
Product Details

Specificity	Detects human gastric inhibitory polypeptide receptor/GIPR transfectants but not irrelevant transfectants in flow cytometry.
Antibody Type	Monoclonal antibody
Host Species	Mouse
Immunogen	GIPR N-terminus, the exact sequence of the immunogen is proprietary.; UniProt # P48546
Formulation / Storage buffer	0.22µm filtered PBS, pH 7.4
Shipping	Frozen Dry Ice
Purification	Affinity Enrichment
Stability & Storage	-80°C
Verified Application	ELISA, Flow cytometry
Recommended Usage	ELISA: starting concentration 1 µg/mL. Flow cytometry: 0.2-0.8 µg/1E6 cells

Bioactive Data, Detection of Antigen by:

ELISA

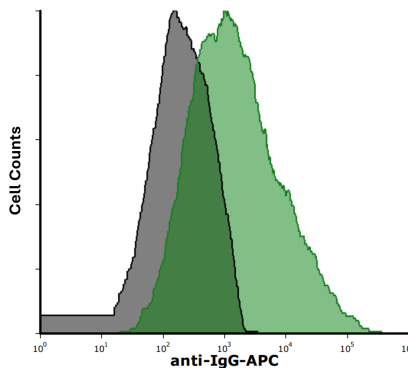
Anti-human GIPR Monoclonal Antibody, ELISA



Immobilized human GIPR fragment at 2 µg/mL (100 µL/well) can bind Mouse Anti-Human GIPR Monoclonal Antibody (Cat. No. CABh-25329) with half maximal effective concentration (EC₅₀) range of 17.6-70.2 ng/mL (QC tested).

Flow Cytometry

mAb binding GIPR expressing live cells (Flow Cytometry)



Detection of GIPR in HEK293 human cell line transiently transfected with human GIPR by Flow Cytometry. HEK293 cell line transfected with human GIPR was stained with isotype control (black curve) or Mouse Anti-Human GIPR Monoclonal Antibody (Cat. No. CABh-25329) (green curve) by APC-conjugated Anti-Mouse IgG Secondary Antibody.



Anti-Human GIPR Monoclonal Antibody

Product Code: CABh-25329

Clone: 5B1-F11

For Research Use Only (RUO)

Antigen Details

Structure	7-transmembrane protein, G protein-coupled receptor (GPCR)
Function	stimulates insulin release
Ligand / Receptor	gastric inhibitory polypeptide (GIP)
Cell Type	Beta-cells
Molecular Family	G protein-coupled receptor
Gene ID	P48546