

<b>Alternate Names</b>	Frizzled-10, Fz-10, Fz10, FzE7, hFz10, cluster of differentiation 350, CD350
<b>Isotype</b>	IgG2a
<b>Conjugate</b>	Unconjugated
<b>Background</b>	Human frizzled class receptor 10 (FZD10), also called Frizzled-10 (Fz-10), Fz10, FzE7, hFz10, or cluster of differentiation 350 (CD350), is a 7-transmembrane G protein-coupled receptor (GPCR). FZD10 is a member of the frizzled gene family, Class F GPCR family. The most frizzled receptors are coupled to the Wnt/beta-catenin canonical signaling pathway. FZD10 is a receptor for Wnt proteins, mediating Wnt-dependent signal transduction. FZD10 is implicated in many types of cancer and is specifically a therapeutic target for colorectal cancer as it is significantly up-regulated in some cases of primary colon cancer. Human FZD10 protein has ~99% and ~93% sequence homology with macaque and mouse FZD10, respectively.

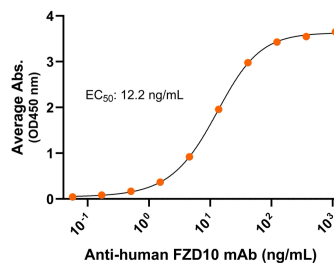
## Product Details

<b>Specificity</b>	Detects human frizzled class receptor 10/FZD10 transfectants but not irrelevant transfectants in flow cytometry.
<b>Antibody Type</b>	Monoclonal antibody
<b>Host Species</b>	Mouse
<b>Immunogen</b>	FZD10 N-terminus, the exact sequence of the immunogen is proprietary.; UniProt # Q9ULW2
<b>Formulation / Storage buffer</b>	0.22µm filtered PBS, pH 7.4
<b>Shipping</b>	Frozen Dry Ice
<b>Purification</b>	Affinity Enrichment
<b>Stability &amp; Storage</b>	-80°C
<b>Verified Application</b>	ELISA, Flow cytometry, SPR
<b>Recommended Usage</b>	ELISA: starting concentration 1 µg/mL Flow cytometry: 0.2-0.8 µg/1E6 cells LSPR: Recommended maximum concentration, 100 nM

## Bioactive Data, Detection of Antigen by:

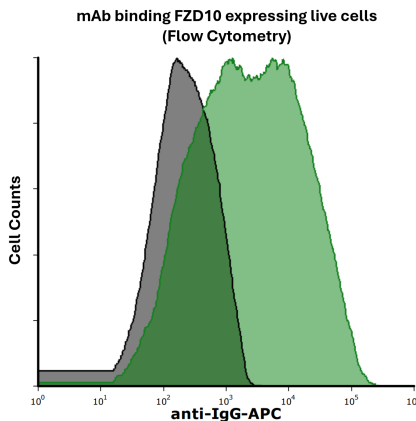
### ELISA

Anti-human FZD10 Monoclonal Antibody, ELISA  
0.2 µg of FZD10 protein per well



Immobilized human FZD10 fragment at 2 µg/mL (100 µL/well) can bind Mouse Anti-Human FZD10 Monoclonal Antibody (Cat. No. CABh-25330) with half maximal effective concentration (EC<sub>50</sub>) range of 6.1-24.4 ng/mL (QC tested).

### Flow Cytometry



Detection of FZD10 in HEK293 human cell line transiently transfected with human FZD10 by Flow Cytometry. HEK293 cell line transfected with human FZD10 was stained with isotype control (black curve) or Mouse Anti-Human FZD10 Monoclonal Antibody (Cat. No. CABh-25330) (green curve) by APC-conjugated Anti-Mouse IgG Secondary Antibody.

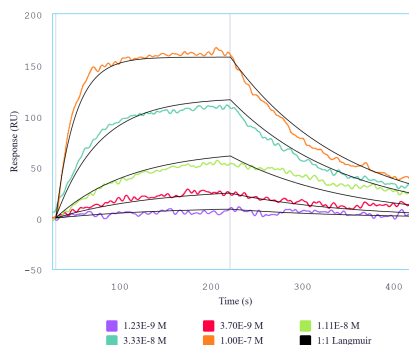
## Anti-Human FZD10 Monoclonal Antibody

**Product Code: CABh-25330**

**Clone: 5E12-G8**

**For Research Use Only (RUO)**

### SPR



Immobilized human FZD10 peptide can bind Mouse Anti-Human FZD10 Monoclonal Antibody (Cat. No. CABh-25330) with a  $K_D$  of 10.1-40.4 nM as determined by LSPR (Nicoya Alto).

## Antigen Details

<b>Structure</b>	7-transmembrane protein, G protein-coupled receptor (GPCR)
<b>Function</b>	Wnt/beta-catenin canonical pathway signaling
<b>Ligand / Receptor</b>	Wnt proteins
<b>Cell Type</b>	Variable expression in most tissues; overexpressed in multiple cancer cells, for example, Synovial sarcoma, colorectal cancer, gastric cancer
<b>Molecular Family</b>	G protein-coupled receptor
<b>Gene ID</b>	Q9ULW2