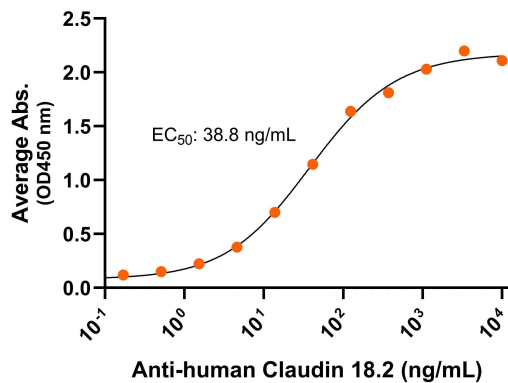


Bioactivity – Antibody Binding

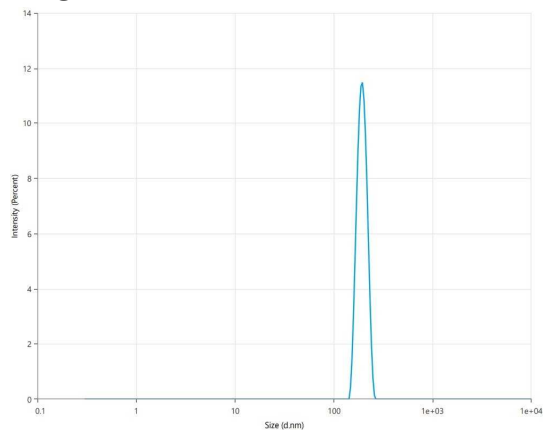
Human Claudin 18.2, ELISA

0.5µg of Claudin 18.2 CMP per well



Immobilized human Claudin 18.2 VLP (Cat. No. CMP-24001) at 5 µg/mL (100 µL/well) can bind monoclonal anti-human Claudin 18.2 antibody with half maximal effective concentration (EC₅₀) range of 19.4-77.6 ng/mL (QC tested).

DLS



The mean peak diameter (nm) of the CMP is 194.4 with a range of 184.4-204.4 with more than 95% intensity as determined by dynamic light scattering (DLS).



Human Claudin 18.2 Full Length Protein, Displayed on Virus-Like Particles (VLPs)

Product Code: CMP-24001
For Research Use Only (RUO)

Expression Host
HEK293T

Protein Name
Claudin 18.2

Alternate Name(s)
Claudin-18.2, CLDN18.2, SFTA5, SFTPJ

Amino Acid Range
Met1-Val261

Protein Construct
Claudin 18.2 full length protein (amino acids Met1-Val261; UniProt# P56856-2), displayed on Virus-Like Particles (VLPs), mimics the native protein conformation on the cell surface. Expressed in HEK293T cell line.

Formulation
0.45µm filtered PBS, pH 7.4

Shipping Conditions
Frozen Dry Ice

Stability & Storage
-80°C

Background

Claudin 18.2, also known as Claudin-18.2, CLDN18.2, SFTA5, and SFTPJ is an integral membrane protein with 4 transmembrane domains, two extracellular loops, one intracellular loop, and both the N-terminus and C-terminus ends towards the cytosol. Human Claudin 18.2 is a member of the Claudin protein family and is involved in tight junctions and cell-to-cell adhesion. Claudin 18.2 is over-expressed on various tumor cells including gastric cancer and pancreatic cancer, and plays a critical role in cancer initiation and progression. Claudin 18.2 is a promising target for cancer therapeutics.