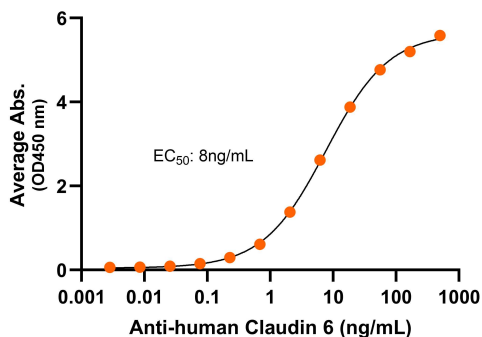


## Bioactivity – Antibody Binding

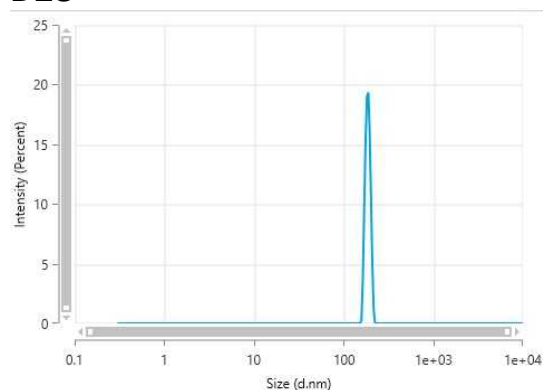
### Human Claudin 6, ELISA

0.5µg of Claudin 6 per well



Immobilized human Claudin 6 VLP (Cat. No. CMP-24007) at 5 µg/mL (100 µL/well) can bind monoclonal anti-human Claudin 6 antibody with half maximal effective concentration (EC50) range of 6.6 - 26.3 ng/mL (QC tested).

## DLS



The mean peak diameter (nm) of the CMP is 177.6 with a range of 162.9-196.6 with more than 95% intensity as determined by dynamic light scattering (DLS).



## Human Claudin 6 Full Length Protein, Displayed on Virus-Like Particles (VLPs)

Product Code: CMP-24007  
For Research Use Only (RUO)

**Expression Host**  
HEK293T

**Alternate Name(s)**  
Claudin-6, CLDN6

**Protein Construct**  
Claudin 6 contains 220 amino acids (Met1 - Val 220; UniProt# P56747), and is displayed on Virus-Like Particles (VLPs), that mimics the native protein conformation on the cell surface. Expressed in HEK293T cell line.

**Shipping Conditions**  
Frozen Dry Ice

**Protein Name**  
Claudin 6

**Amino Acid Range**

**Formulation**  
0.45µm filtered PBS, pH 7.4

**Stability & Storage**  
-80°C

### Background

Claudin 6, also known as Claudin-6 and CLDN6, is an integral membrane protein with 4 transmembrane domains, two extracellular loops, one intracellular loop, and both N-terminus and C-terminus ends towards the cytosol. Human Claudin 6 is a member of the Claudin protein family and is involved in tight junctions and cell-to-cell adhesion. It is highly and widely expressed on various tumor cells, and plays a critical role in cancer initiation and progression, and is a promising target for cancer therapeutics.