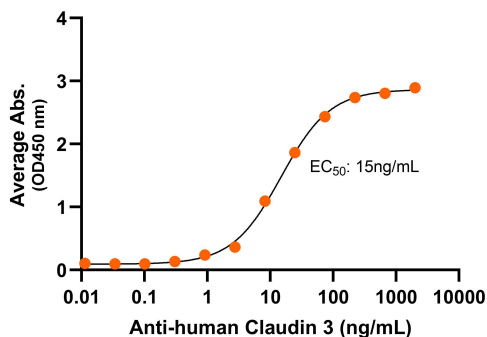


Bioactivity – Antibody Binding

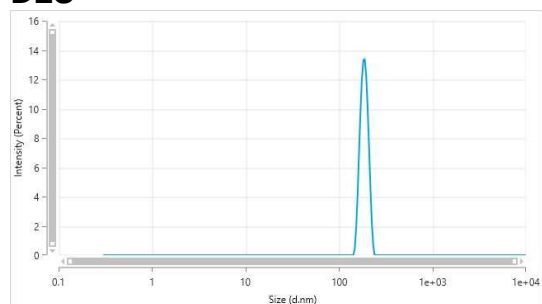
Human Claudin 3, ELISA

0.5µg of Claudin 3 per well



Immobilized human Claudin 3 VLP (Cat. No. CMP-24008) at 5 µg/mL (100 µL/well) can bind monoclonal anti-human Claudin 3 antibody with a half maximal effective concentration (EC₅₀) range of 9.2 - 36.7 ng/mL (QC tested).

DLS



The mean peak diameter (nm) of the CMP is 186.5 with a range of 169.4-200.3 with more than 95% intensity as determined by dynamic light scattering (DLS).



Human Claudin 3 Full Length Protein, Displayed on Virus-Like Particles (VLPs)

Product Code: CMP-24008
For Research Use Only (RUO)

Expression Host
HEK293T

Alternate Name(s)
Claudin-3, CLDN3

Protein Construct
Claudin 3 protein contains 220 amino acids (Met1 - Val220; UniProt# P15551), and is displayed on Virus-Like Particles (VLPs), that mimics the native protein conformation on the cell surface. Expressed in HEK293T cell line.

Shipping Conditions
Frozen Dry Ice

Protein Name
Claudin 3

Amino Acid Range

Formulation
0.45µm filtered PBS, pH 7.4

Stability & Storage
-80°C

Background

Claudin 3, also known as Claudin-3 and CLDN3, is an integral membrane protein with 4 transmembrane domains, two extracellular loops, one intracellular loop, and both N-terminus and C-terminus ends towards the cytosol. Human Claudin 3 is a member of the Claudin protein family, involved with tight junctions and cell-to-cell adhesion. Claudin 3 is expressed on intestinal epithelia cells, and associated with Williams-Beuren Syndrome and Cholesteatoma.