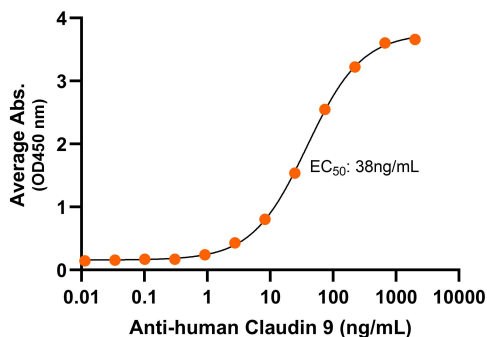


Bioactivity – Antibody Binding

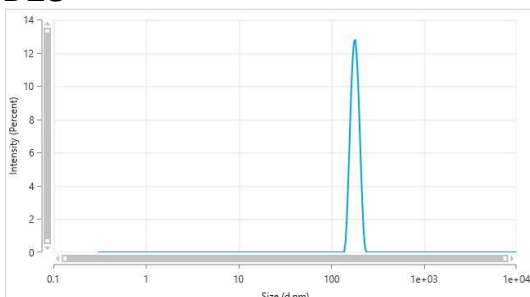
Human Claudin 9, ELISA

0.5µg of Claudin 9 per well



Immobilized human Claudin 9 VLP (Cat. No. CMP-24009) at 5 µg/mL (100 µL/well) can bind monoclonal anti-human Claudin 9 antibody with half maximal effective concentration (EC50) range of 18.6 to 74.4 ng/mL (QC tested).

DLS



The mean peak diameter (nm) of the CMP is 183 with a range of 165.6-202.4 with more than 95% intensity as determined by dynamic light scattering (DLS).



Human Claudin 9 Full Length Protein, Displayed on Virus-Like Particles (VLPs)

Product Code: CMP-24009
For Research Use Only (RUO)

Expression Host
HEK293T

Alternate Name(s)
Claudin-9, CLDN9

Protein Construct
Claudin 9 protein contains 217 amino acids (Met1 - Val217; UniProt# O95484), and is displayed on Virus-Like Particles (VLPs), that mimics the native protein conformation on the cell surface. Expressed in HEK293T cell line.

Shipping Conditions
Frozen Dry Ice

Protein Name
Claudin 9

Amino Acid Range
Met1 - Val217

Formulation
0.45µm filtered PBS, pH 7.4

Stability & Storage
-80°C

Background

Claudin 9, also known as Claudin-9 and CLDN9, is an integral membrane protein with 4 transmembrane domains, two extracellular loops, one intracellular loop, and both N-terminus and C-terminus ends towards the cytosol. Human Claudin 9 is a member of the Claudin protein family, involved with tight junctions and cell-to-cell adhesion. Claudin 9 is expressed at low levels in normal tissue, but is ectopically expressed in numerous cancers. Claudin 9 is a novel prognostic biomarker for endometrial cancer and also functions as a co-receptor for Hepatitis C Virus.