
Alternate Names	MAS proto-oncogene, MAS, MGRA
Isotype	IgG2a
Conjugate	Unconjugated
Background	Human MAS1 proto-oncogene (MAS1), is a 7-transmembrane G protein-coupled receptor (GPCR). MAS1 is a Class A GPCR. Angiotensin-(1–7) is the ligand for MAS1 and MAS1 plays a key role in the renin–angiotensin system (RAS), which regulates blood pressure, fluid balance, and cardiovascular function. Unlike classical angiotensin receptors such as AT1 and AT2, MAS1 is considered part of the protective arm of the RAS. Therapeutic potential of MAS1 receptor has gained increasing attention and is being explored as a target for treating hypertension, heart failure, and even complications related to metabolic and pulmonary diseases. Additionally, MAS1 has been studied in the context of COVID-19, as it interacts with ACE2-related pathways. Human MAS1 protein has 85-90% sequence homology with mouse MAS1.

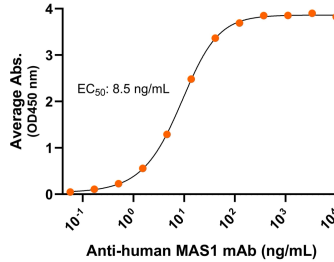
Product Details

Specificity	Detects human MAS1 proto-oncogene/MAS1 transfectants but not irrelevant transfectants in flow cytometry.
Antibody Type	Monoclonal antibody
Host Species	Mouse
Immunogen	MAS1 N-terminus extracellular domain, the exact sequence of the immunogen is proprietary.; UniProt # P04201
Formulation / Storage buffer	0.22µm filtered PBS, pH 7.4
Shipping	Frozen Dry Ice
Purification	Affinity Enrichment
Stability & Storage	-80°C
Verified Application	ELISA, Flow cytometry
Recommended Usage	ELISA: starting concentration 1 µg/mL Flow cytometry: 0.8 µg/1E6 cells

Bioactive Data, Detection of Antigen by:

ELISA

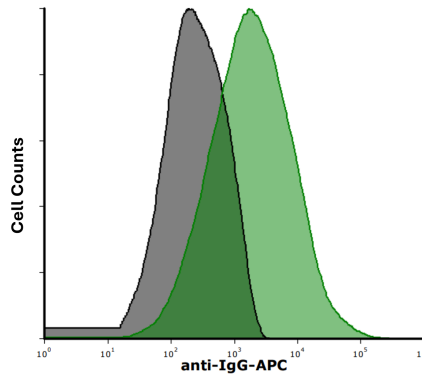
Anti-human MAS1 Monoclonal Antibody, ELISA
 0.2µg of MAS1 protein per well



Immobilized human MAS1 fragment at 2 µg/mL (100 µL/well) can bind Mouse Anti-Human MAS1 Monoclonal Antibody (Cat. No. CABh-25325) with half maximal effective concentration (EC50) range of 4.3-17 ng/mL (QC tested).

Flow Cytometry

mAb binding MAS1 expressing live cells
(Flow Cytometry)



Detection of MAS1 in HEK293 human cell line transiently transfected with human MAS1 by Flow Cytometry. HEK293 cell line transfected with human MAS1 was stained with isotype control (black curve) or Mouse Anti-Human MAS1 Monoclonal Antibody (Cat. No. CABh-25325) (green curve) by APC-conjugated Anti-Mouse IgG Secondary Antibody.



Anti-Human MAS1 Monoclonal Antibody

Product Code: CABh-25325

Clone: 1F4-F10

For Research Use Only (RUO)

Antigen Details

Structure	7-transmembrane protein, G protein-coupled receptor (GPCR)
Function	Key role in the renin–angiotensin system (RAS)
Ligand / Receptor	Angiotensin-(1–7)
Cell Type	Wide distribution, especially Cardiovascular and Nervous systems
Molecular Family	G protein-coupled receptor
Gene ID	P04201