



Anti-Human GPR126 Monoclonal Antibody

Product Code: CABh-25392

Clone: 3G6-E7

For Research Use Only (RUO)

Alternate Names	ADGRG6, APG1, DREG, PS1TP2, VIGR, LCCS9, adhesion G protein-coupled receptor G6, PR126
Isotype	IgG1
Conjugate	Unconjugated
Background	Human G protein-coupled receptor 126 (GPR126), is a 7-transmembrane G protein-coupled receptor (GPCR). GPR126 is a member of the adhesion GPCR family. GPR126 is essential for Schwann cell myelination. However, it has been found that GPR126 can have a pathological role in degenerative joint disorders, scoliosis, tumorigenesis and angiogenesis making it a target for potential therapeutics. Human GPR126 protein has >90% sequence homology with mouse GPR126.

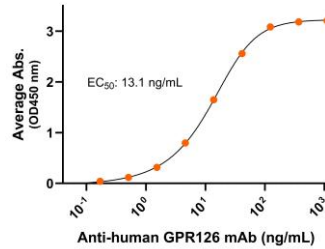
Product Details

Specificity	Detects human G protein-coupled receptor 126/GPR126 transfectants but not irrelevant transfectants in flow cytometry.
Antibody Type	Monoclonal antibody
Host Species	Mouse
Immunogen	GPR126 N-terminus extracellular domain, the exact sequence of the immunogen is proprietary.; UniProt # Q86SQ4
Formulation / Storage buffer	0.22µm filtered PBS, pH 7.4
Shipping	Frozen Dry Ice
Purification	Affinity Enrichment
Stability & Storage	-80°C
Verified Application	ELISA, Flow cytometry
Recommended Usage	ELISA: starting concentration 1 µg/mL Flow cytometry: 0.8 µg/1E6 cells

Bioactive Data, Detection of Antigen by:

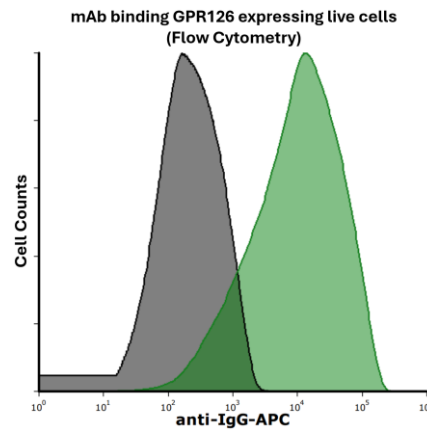
ELISA

Anti-human GPR126 Monoclonal Antibody, ELISA
 0.2µg of GPR126 protein per well



Immobilized human GPR126 fragment at 2 µg/mL (100 µL/well) can bind mouse Anti-Human GPR126 Monoclonal Antibody (Cat. No. CABh-25392) with half maximal effective concentration (EC₅₀) range of 6.6-26.2 ng/mL (QC tested).

Flow Cytometry



Detection of GPR126 in HEK293 human cell line transiently transfected with human GPR126 by Flow Cytometry. HEK293 cell line transfected with human GPR126 was stained with isotype control (black curve) or mouse Anti-Human GPR126 Monoclonal Antibody (Cat. No. CABh-25392) (green curve) by APC-conjugated Anti-Mouse IgG Secondary Antibody.



Anti-Human GPR126 Monoclonal Antibody
Product Code: CABh-25392
Clone: 3G6-E7
For Research Use Only (RUO)

Antigen Details

Structure	7-transmembrane protein, G protein-coupled receptor (GPCR)
Function	mediate myelination
Ligand / Receptor	collagen IV and laminin-211 promoting cyclic adenosine monophosphate (cAMP)
Cell Type	excitatory and inhibitory neurons, and microglia
Molecular Family	G protein-coupled receptor
Gene ID	Q86SQ4