

---

<b>Alternate Names</b>	PROKR2, GPR73L1, GPR73b, GPRg2, HH3, KAL3, dJ680N4.3
<b>Isotype</b>	IgG2b
<b>Conjugate</b>	Unconjugated
<b>Background</b>	Human prokineticin receptor 2 (PKR2), is a 7-transmembrane G protein-coupled receptor (GPCR). PKR2 is a Class A GPCR and prokineticin 2 is its ligand. PKR2 is a potential therapeutic target for treatment of cardiovascular, metabolic, neural diseases, and cancer. It has also been proposed that PKR2 plays a role in pain regulation. Human PKR2 protein has ~90% sequence homology with mouse PKR2.

## Product Details

---

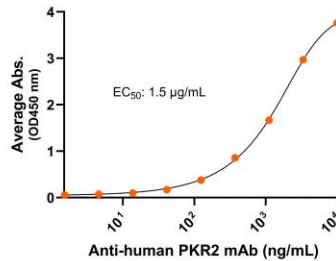
<b>Specificity</b>	Human
<b>Antibody Type</b>	Monoclonal antibody
<b>Host Species</b>	Mouse
<b>Immunogen</b>	PKR2 N-terminus extracellular domain, the exact sequence of the immunogen is proprietary.; UniProt # Q8NFJ6
<b>Formulation / Storage buffer</b>	Lyophilized from 0.22 µm filtered solution in PBS, pH 7.4 with 10% trehalose as protectant
<b>Reconstitution</b>	For best performance, we strongly recommend you reconstitute the lyophilized product with deionized water to a stock solution of 500 µg/mL. Solubilize for 20 minutes at room temperature with occasional gentle mixing. Avoid shaking or vortexing. For 25µg product size: Reconstitute with 50 µL sterile deionized water. For 100µg product size: Reconstitute with 200 µL sterile deionized water.

<b>Shipping</b>	Frozen Ice Packs
<b>Purification</b>	Affinity Enrichment
<b>Stability &amp; Storage</b>	-20°C
<b>Verified Application</b>	ELISA
<b>Recommended Usage</b>	ELISA: starting concentration 1 µg/mL

## Bioactive Data, Detection of Antigen by:

### ELISA

Anti-human PKR2 Monoclonal Antibody, ELISA  
 0.2µg of PKR2 protein per well



Immobilized human PKR2 fragment at 2 µg/mL (100 µL/well) can bind mouse Anti-Human PKR2 Monoclonal Antibody (Cat. No. CABh-25385) with half maximal effective concentration (EC<sub>50</sub>) range of 0.8-3 µg/mL (QC tested).

## Antigen Details

<b>Structure</b>	7-transmembrane protein, G protein-coupled receptor (GPCR)
<b>Function</b>	mobilization of calcium, stimulation of phosphoinositide turnover and activation of p44/p42 mitogen-activated protein kinase
<b>Ligand / Receptor</b>	prokineticin 2
<b>Cell Type</b>	mainly found in the central nervous system
<b>Molecular Family</b>	G protein-coupled receptor
<b>Gene ID</b>	Q8NFJ6