

Anti-Human GPR75 Monoclonal Antibody

Product Code: CABh-25401

Clone: 2D4-H9

For Research Use Only (RUO)

Alternate Names	GPRchr2, WI31133, G protein-coupled receptor 75 IgG2b, clone # 2D4-H9
Isotype	IgG2b
Conjugate	Unconjugated
Background	Human probable G-protein coupled receptor 75 (GPR75), is a 7-transmembrane G protein-coupled receptor (GPCR). GPR75 is a Class A GPCR and plays critical roles in cellular signaling. GPR75 is expressed in several tissues, including the brain, where it is thought to be involved in neural signaling and metabolic regulation. GPR75 has gained increasing attention due to its proposed role in regulating energy balance and metabolism, reducing body mass index and protecting against obesity. GPR75 represents an important area of ongoing research, with promising implications for understanding and treating metabolic diseases. Human GPR75protein has 85-90% sequence homology with mouse GPR75.

Product Details

Specificity	Detects human probable G-protein coupled receptor 75/GPR75 transfectants but not irrelevant transfectants in flow cytometry.
Antibody Type	Monoclonal antibody
Host Species	Mouse
Immunogen	GPR75 N-terminus extracellular domain, the exact sequence of the immunogen is proprietary.; UniProt # O95800
Formulation / Storage buffer	Lyophilized from 0.22 µm filtered solution in PBS, pH 7.4 with 10% trehalose as protectant



Anti-Human GPR75 Monoclonal Antibody

Product Code: CABh-25401

Clone: 2D4-H9

For Research Use Only (RUO)

Reconstitution

For best performance, we strongly recommend you reconstitute the lyophilized product with deionized water to a stock solution of 500 µg/mL.

Solubilize for 20 minutes at room temperature with occasional gentle mixing. Avoid shaking or vortexing.

For 25µg product size:
Reconstitute with 50 µL sterile deionized water.

For 100µg product size:
Reconstitute with 200 µL sterile deionized water.

Shipping

Frozen Ice Packs

Purification

Affinity Enrichment

Stability & Storage

-20°C

Verified Application

ELISA, Flow cytometry

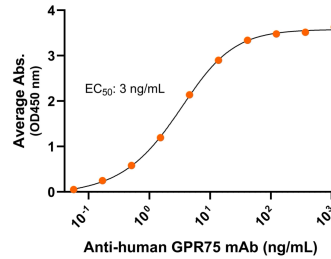
Recommended Usage

ELISA: starting concentration 1 µg/mL
Flow cytometry: 0.8 µg/1E6 cells

Bioactive Data, Detection of Antigen by:

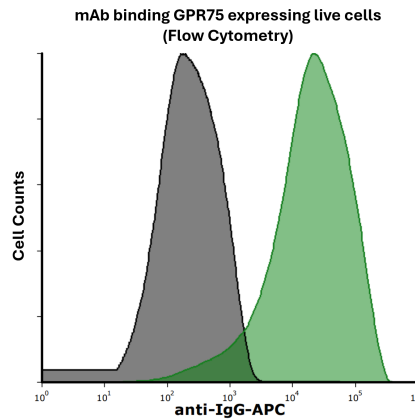
ELISA

Anti-human GPR75 Monoclonal Antibody, ELISA
 0.2µg of GPR75 protein per well



Immobilized human GPR75 fragment at 2 µg/mL (100 µL/well) can bind mouse Anti-Human GPR75 Monoclonal Antibody (Cat. No. CABh-25401) with half maximal effective concentration (EC50) range of 1.5-6 ng/mL (QC tested).

Flow Cytometry



Detection of GPR75 in HEK293 human cell line transiently transfected with human GPR75 by Flow Cytometry. HEK293 cell line transfected with human GPR75 was stained with isotype control (black curve) or mouse Anti-Human GPR75 Monoclonal Antibody (Cat. No. CABh-25401) (green curve) by APC-conjugated Anti-Mouse IgG Secondary Antibody.



Anti-Human GPR75 Monoclonal Antibody

Product Code: CABh-25401

Clone: 2D4-H9

For Research Use Only (RUO)

Antigen Details

Structure	7-transmembrane protein, G protein-coupled receptor (GPCR)
Function	Cellular signaling
Ligand / Receptor	Unknown
Cell Type	Various tissues and cell types, including neurons and Vascular endothelial & smooth muscle cells
Molecular Family	G protein-coupled receptor
Gene ID	O95800