



Anti-Human CX3CR1 Monoclonal Antibody

Product Code: CABh-25316

Clone: 4E9-C11

For Research Use Only (RUO)

Alternate Names	Fractalkine receptor, G-protein coupled receptor 13, GPR13, CCRL1, CMKBRL1, CMKDR1, GPRV28, V28, C-X3-C motif chemokine receptor 1
Isotype	IgG2a
Conjugate	Unconjugated
Background	Human CX3C motif chemokine receptor 1 (CX3CR1), is a 7-transmembrane G protein-coupled receptor (GPCR). CX3CR1 is a class A GPCR. CX3CR1 is expressed on numerous cell types, including various cells from hematopoietic lineage such as T lymphocytes, natural killer cells, and macrophages. Interaction of CX3CR1 with its ligand CX3CL1 mediates recruitment of immune cells by migration through chemotaxis and diapedesis as well as mediating migration, adhesion and retention of leukocytes. CX3CR1 increases accumulation of immune cells in affected areas of the body, which can result in aggravation of several diseases such as Rheumatoid arthritis, Renal diseases, Chronic liver disease, and Crohn's disease. CX3CR1 is also a coreceptor for HIV-1/HIV-2 and respiratory syncytial virus (RSV). In the tumor microenvironment (TME), CX3CR1 plays a dual role depending on context — it can promote immune cell infiltration and anti-tumor activity, or contribute to immune suppression and poor prognosis. Human CX3CR1 protein has ~99% sequence homology with mouse CX3CR1.

Product Details

Specificity	Detects human CX3C motif chemokine receptor 1/CX3CR1 transfectants but not irrelevant transfectants in flow cytometry.
Antibody Type	Monoclonal antibody
Host Species	Mouse
Immunogen	CX3CR1 N-terminus, the exact sequence of the immunogen is proprietary.; UniProt # P49238
Formulation / Storage buffer	Lyophilized from 0.22 µm filtered solution in PBS, pH 7.4 with 10% trehalose as protectant



Anti-Human CX3CR1 Monoclonal Antibody

Product Code: CABh-25316

Clone: 4E9-C11

For Research Use Only (RUO)

Reconstitution

For best performance, we strongly recommend you reconstitute the lyophilized product with deionized water to a stock solution of 500 µg/mL.

Solubilize for 20 minutes at room temperature with occasional gentle mixing. Avoid shaking or vortexing.

For 25µg product size:
Reconstitute with 50 µL sterile deionized water.

For 100µg product size:
Reconstitute with 200 µL sterile deionized water.

Shipping

Frozen Ice Packs

Purification

Affinity Enrichment

Stability & Storage

-20°C

Verified Application

ELISA, Flow cytometry

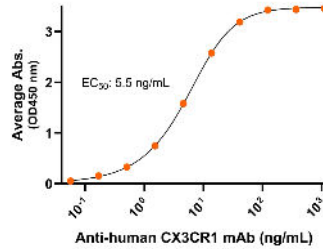
Recommended Usage

ELISA: starting concentration 1 µg/mL
Flow cytometry: 0.8 µg/1E6 cells

Bioactive Data, Detection of Antigen by:

ELISA

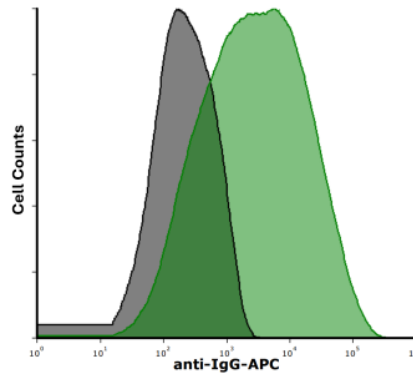
Anti-human CX3CR1 Monoclonal Antibody, ELISA
 0.2µg of CX3CR1 protein per well



Immobilized human CX3CR1 fragment at 2 µg/mL (100 µL/well) can bind mouse Anti-Human CX3CR1 Monoclonal Antibody (Cat. No. CABh-25316) with half maximal effective concentration (EC50) range of 2.8-11 ng/mL (QC tested).

Flow Cytometry

mAb binding CX3CR1 expressing live cells (Flow Cytometry)



Detection of CX3CR1 expressed on HEK293 cell surface transiently transfected with full-length human CX3CR1 by Flow Cytometry. HEK293 cell line transfected with human CX3CR1 was stained with isotype control (black curve) or mouse Anti-Human CX3CR1 Monoclonal Antibody (Cat. No. CABh-25316) (green curve) by APC-conjugated Anti-Mouse IgG Secondary Antibody.



Anti-Human CX3CR1 Monoclonal Antibody

Product Code: CABh-25316

Clone: 4E9-C11

For Research Use Only (RUO)

Antigen Details

Structure	7-transmembrane protein, G protein-coupled receptor (GPCR)
Function	mediates recruitment of immune cells
Ligand / Receptor	CX3CL1
Cell Type	numerous cell types, including T lymphocytes, natural killer cells, and macrophages
Molecular Family	G protein-coupled receptor
Gene ID	P49238