
Product Name: Human Siglec 6 Protein Dimer, His-Avi Tag

Product Code: CSP-26203-03

FOR RESEARCH USE ONLY (RUO)

Protein Name: Siglec 6, Protein Dimer

Alternate Name(s): Cluster of Differentiation 327, CD327, CD33-like, CD33L, CD33L1, CD33L2, CDW327, SIGLEC6, Siglec 6

Expression Host
HEK293T

Amino Acid Range
Q27 - V347

Protein Construct

Siglec-6 protein dimer contains a Siglec-6 extracellular domain (UniProt# O43699) fused with a proprietary cis-dimer motif followed by a tandem His-Avi tag at the C-terminus. Expressed in HEK293T cell line.

SDS-Page Molecular Weight

87 kDa. The migration range of the protein dimer with glycosylation under non-reducing condition is 190 kDa on SDS PAGE.

Purity

Greater than 90% dimer form as determined by SDS-PAGE under non-reducing condition

Shipping Conditions

Frozen Ice Packs

Stability & Storage

-20°C

Formulation

Lyophilized from 0.22 µm filtered solution in PBS, pH 7.4 with 10% trehalose as protectant

Reconstitution of lyophilized product

For best performance, we strongly recommend you reconstitute the lyophilized product with deionized water to a stock solution of 500 µg/mL.

Solubilize for 20 minutes at room temperature with occasional gentle mixing. Avoid shaking or vortexing.

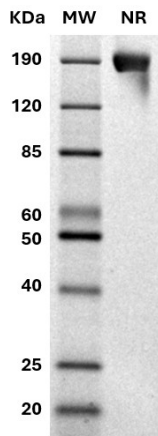
For 25µg product size:

Reconstitute with 50 µL sterile deionized water.

For 100µg product size:

Reconstitute with 200 µL sterile deionized water.

SDS-PAGE

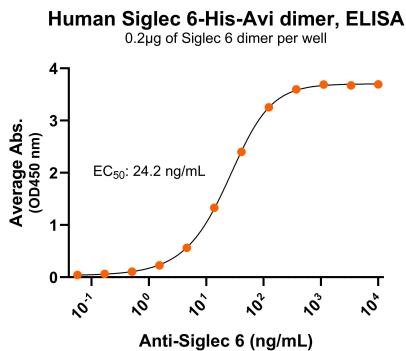


MW: Molecular Weight marker reduced condition

NR: Siglec 6 dimer under non-reduced condition

The migration range of the protein dimer with glycosylation under non-reducing condition is 190 kDa on SDS PAGE.

Antibody Binding



Immobilized human Siglec 6 protein dimer, His-Avi Tag (CSP-26203-03) at 2 µg/mL (100 µL/well) can bind anti-human Siglec 6 monoclonal antibody with half maximal effective concentration (EC₅₀) range of 12.1-48.4 ng/mL (QC tested).

Background

Human sialic acid-binding Ig-like lectin 6 (Siglec-6) is a Type I transmembrane protein, a member of the Siglec family, part of the immunoglobulin superfamily, and a multifunctional immune regulator. Siglec-6 is also known as Cluster of Differentiation 327 (CD327), CD33-like (CD33L), CD33L1, CD33L2, and CDW327. Siglec-6 contains an extracellular domain with an N-terminal V-type immunoglobulin domain (Ig domain) and two C2-type Ig domains followed by a transmembrane domain and cytoplasmic signaling domain consisting of the immunoreceptor tyrosine-based inhibitory motif (ITIM). Siglec-6 is expressed on trophoblasts and highly expressed on mast cells from a variety of tissues. It binds sialylated glycans on cell surfaces or secreted proteins, modulating cell-cell interactions and immune responses. The presence of Siglec-6 on various kinds of leukemias has made it an emerging target for cancer therapeutics.